

GROWING THROUGH CHANGE RE-ENTRY AND BEYOND

Plenary 4 – Ruth E. Van Reken

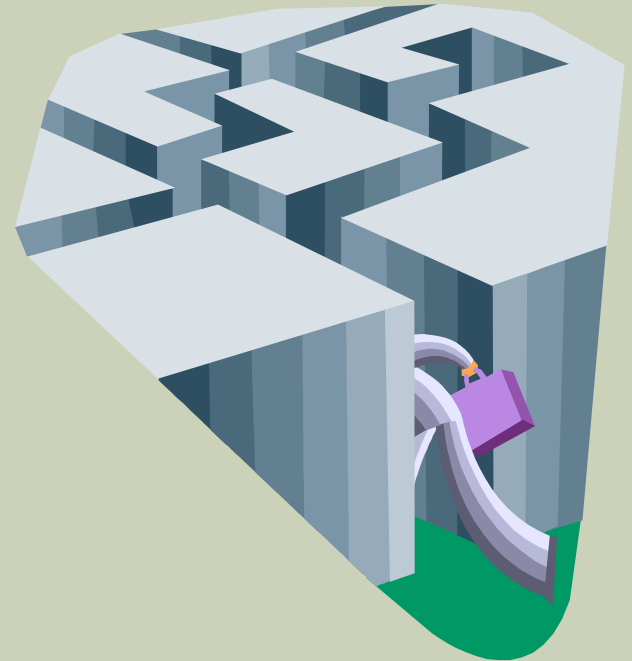
Euro TCK

April 28, 2013

Friolzheim, Germany

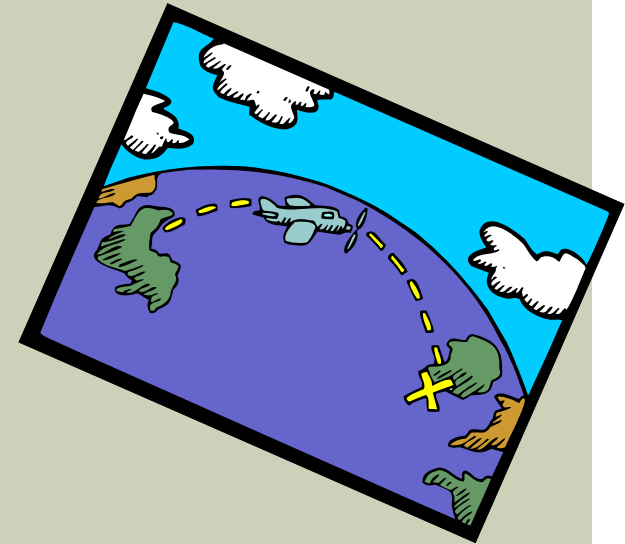
OVERVIEW

- Reentry short version
- Growing up in a “God system”
- Ways to grow from the paradox



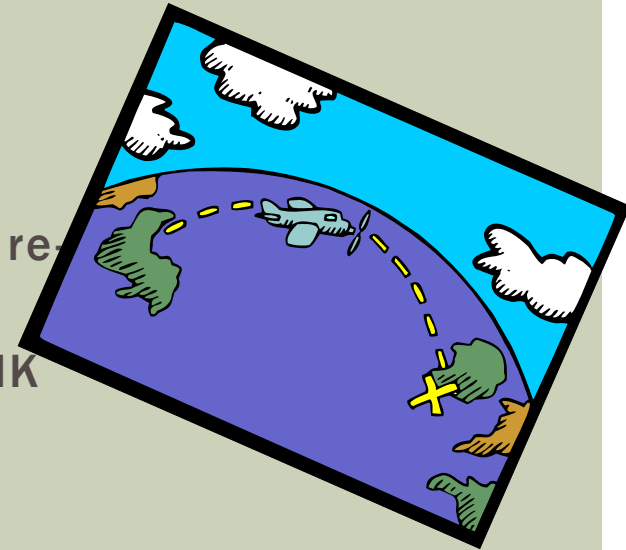
WHERE DOES RE-ENTRY START?

- In the *leaving* phase – again, saying a healthy goodbye, doing the needed mourning, thinking destination, finding ways to keep contact
- Go through *transition* phase – reverse culture shock



WHERE DOES RE-ENTRY START?

- *Entry* phase
- *Re-involvement* we hope!
 - What keeps some MKs from ever truly feeling re-involved?
 - Do those who reach re-involvement come to MK meetings?

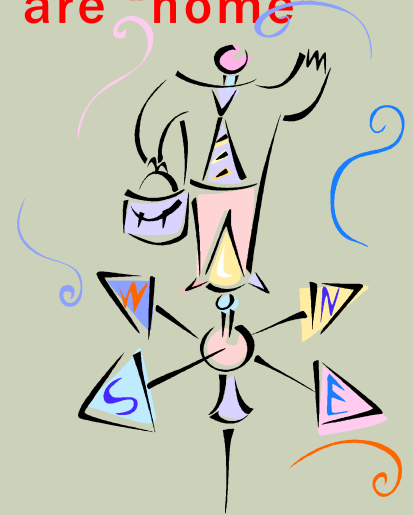


**But it's not
the same as transition before.**

What has changed?

EVERYTHING!! LIKE BEFORE...

- Changing worlds
- Changing family structure/dynamics
- Changing role or status
- **Changed expectation of repatriation – now you are “home”**



ONCE MORE...



Transition inter

rupts the story

VARIABLE FACTORS IMPACTING RE-ENTRY

- If TCK has lived overseas from birth and this is first long term cross-cultural move
- Age of leaving initially
- Age of return
- How often they have been 'home' while overseas



VARIABLE FACTORS IMPACTING RE-ENTRY

- Ease of meshing school curriculum
- Expectation or not of reverse “culture shock”
- Physical appearance compared to surrounding culture
- The culture of the host culture compared to the passport culture



POTENTIALLY, THIS BECOMES A HUGE FACTOR

Foreigner	Hidden Immigrant
Look Different Think Different Speak Different	Look Alike Think Different Speak Different/Alike
Adopted	Mirror
Look Different Think Alike Speak Alike	Look Alike Think Alike Speak Alike

PolVan Cultural Identity Model @1996

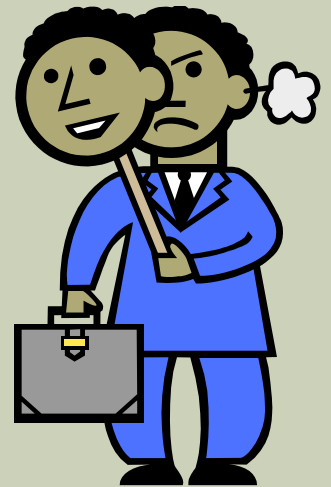
REMINDER: COMMON REACTIONS DURING THIS TIME



- **"Chameleon"**—tries to find "same as" identity
- **"Screamer"**—tries to find "different from" identity
- **"Wallflower"**—tries to find "non-identity"

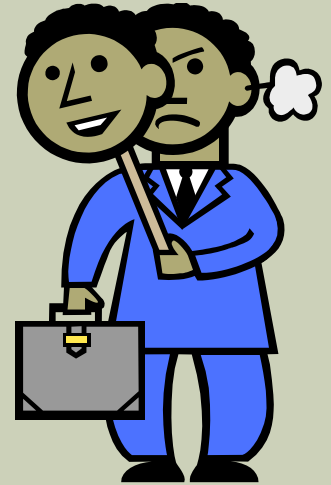
WHAT HAPPENS IN REVERSE CULTURE SHOCK?

- **Fun** We enjoy the adventure
- **Flight** We begin to compare everything (often unfavorably) to where we've just been
- **Flight** We're angry no one seems to care where we've been, what we've learned, all we've experienced
 - "No one cares....."



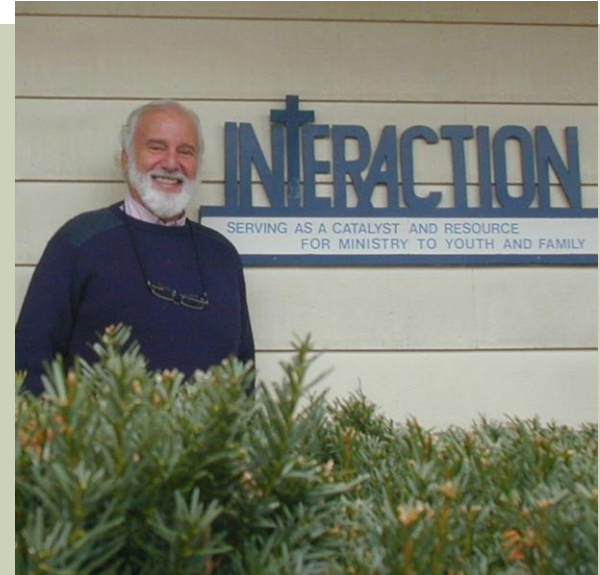
WHAT HAPPENS IN REVERSE CULTURE SHOCK?

- We can begin to disdain those from our own home culture as “stupid, ignorant, shallow, etc.”
- We wish life here could have stayed “as it was” – who am I here?
- **Fit** - We can make a decision to learn this culture as well and



HELPING WITH RE-ENTRY

- Again, Normalize the process
 - Reentry camps
- For “reentry,” help children think through the answer to “Where are you from?” before they repatriate
- Mentors, tutors if needed



STRATEGIES FOR GROWING THROUGH TRANSITION

- For families sending children to university in a culture outside passport culture, maintain “sense of home” here and seek to make connections for support there



STRATEGIES FOR GROWING THROUGH TRANSITION, INCLUDING REENTRY

- Remind TCKs that they can never lose what they have gained as TCKs/CCKs
 - Moving towards the future (including their passport culture) is simply building on that foundation



STRATEGIES FOR GROWING THROUGH TRANSITION, INCLUDING REENTRY

- It's OK to be “all of the above” rather than having to pick ‘one of the above’



STRATEGIES FOR GROWING THROUGH REENTRY

- Again, Remind them of what one TCK said
 - “My life is like Windows. I know all the screens are open in the background but I have to work in the one that’s on the screen right now.”



AN EXTRA CHALLENGE FOR MKS

Religious culture
shock

SOME REASONS FOR RELIGIOUS CULTURE SHOCK

- Ardency of faith may seem less at “home” than in host culture
- Ways of expressing faith may be different
- Have to separate cultural expressions of faith from the essence or core beliefs
 - Faith can be very politicized



SPECIAL PRIVILEGES AND PERILS FOR MKS GROWING UP IN A 'GOD-SYSTEM'



WHAT IS A SYSTEM?

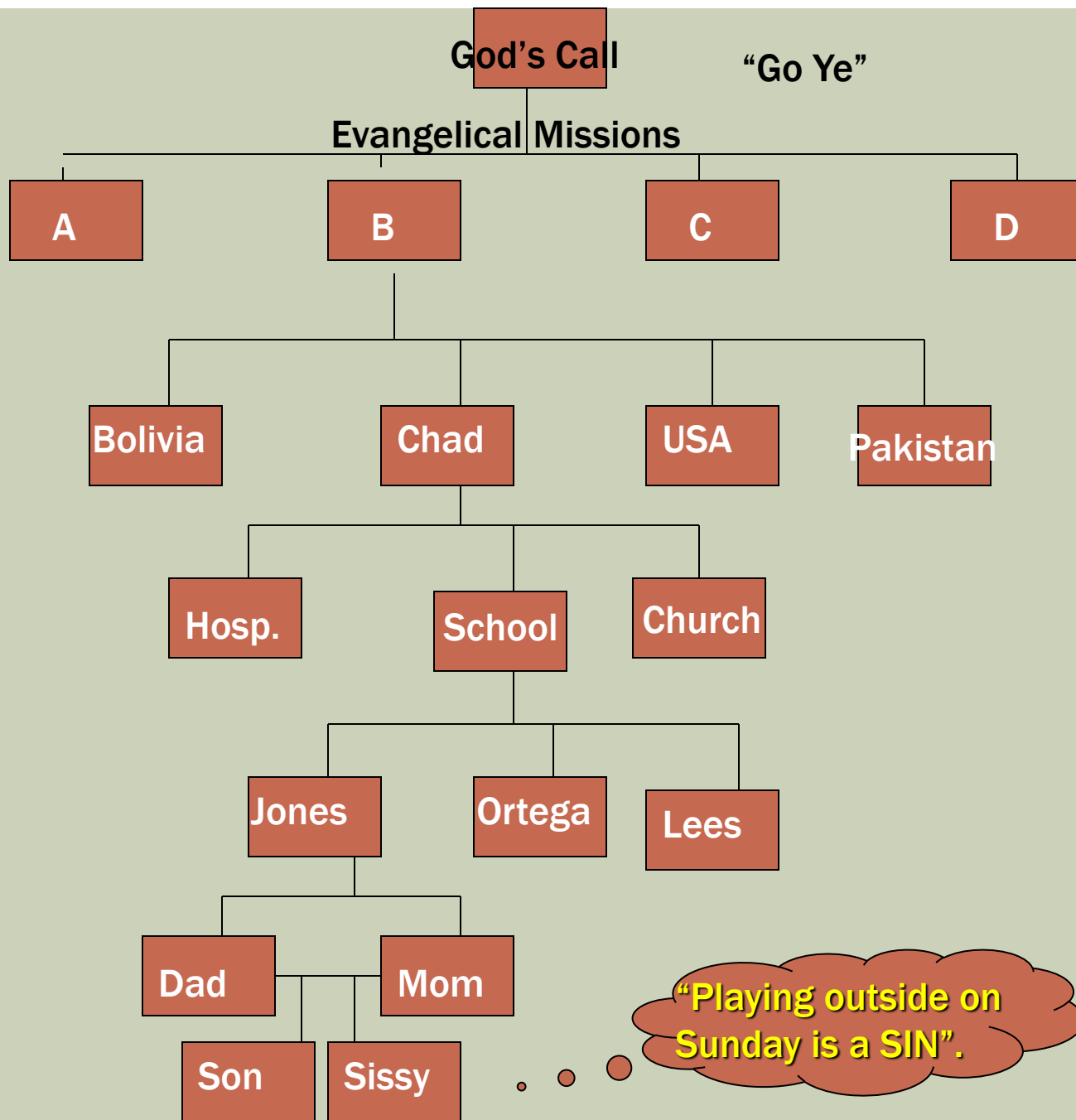
- Something God instituted from the beginning
 - Family
 - Tribes
 - Nations
 - Organizations



WHAT IS A SYSTEM?

- It's more than what each individual believes
- It's more than how each person would act if acting alone
- It consists of the unspoken as well as the spoken expectations and dynamics
- Consists of many interrelated parts and subsystems





WHAT IS THE GOD-GIVEN PURPOSE OF A HEALTHY SYSTEM?

- Creates stability
- Promotes growth and change
- Gives a place of security and/or belonging
- Creates predictability—both good and bad



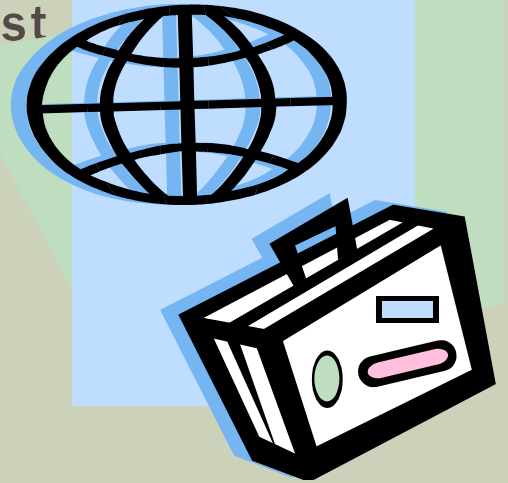
TYPES OF SYSTEMS IN THIRD CULTURE COMMUNITIES

- Military system
- Foreign service corps
- Corporate culture
- Missionary subculture



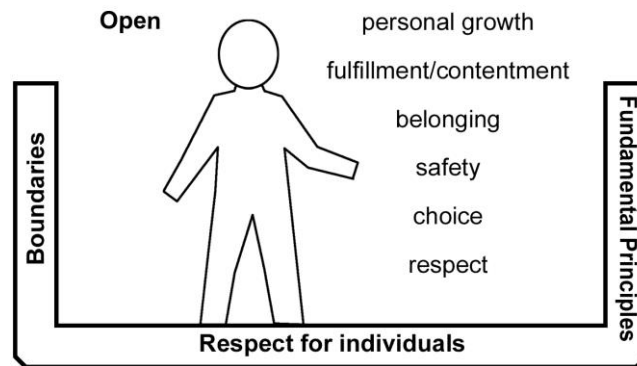
WHY DO THESE SYSTEMS HAVE PARTICULAR POWER ON/OVER TCKS?

- Decisions made for parent's career direction affects every member of the family – not just the “employee”
- The decisions of the leaders of the organization/company can trump personal, parental decisions



WHAT A PERSON IN A HEALTHY SYSTEM LOOKS LIKE...

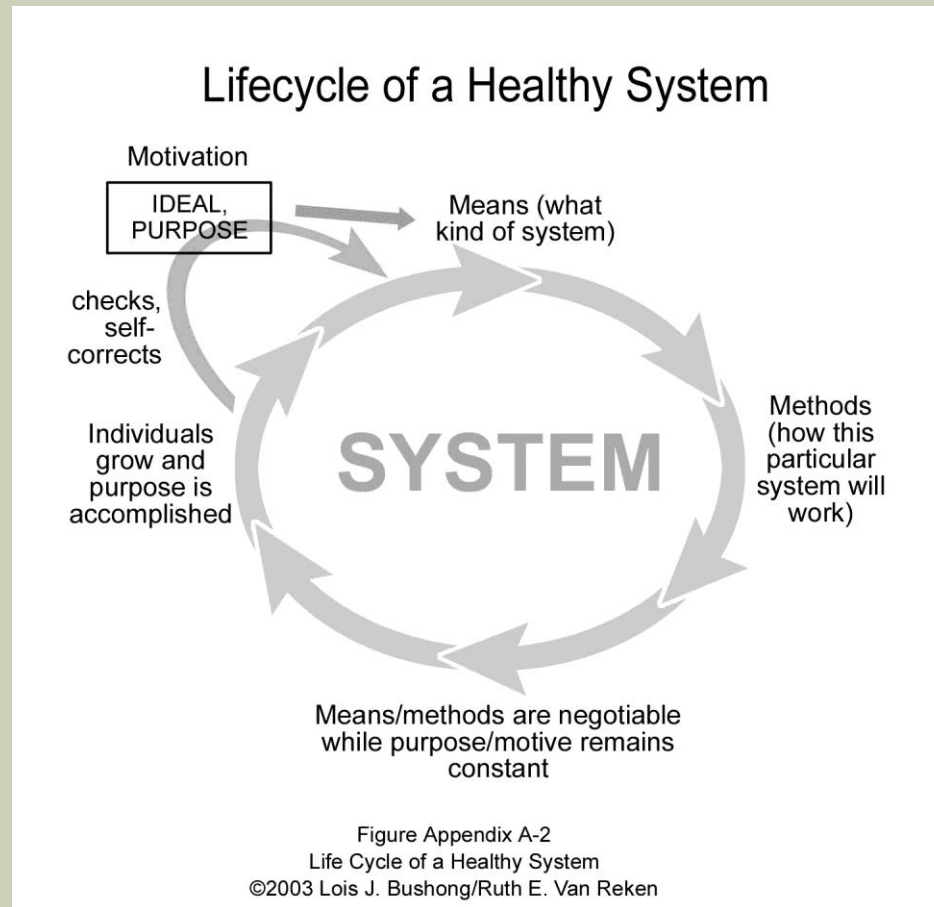
Individual in a Healthy System



Offers stability while promoting growth and change

Appendix A-3
©2003 Lois Bushong/Ruth E. Van Reken

HOW HEALTHY SYSTEM WORKS...



HOW AN UNHEALTHY SYSTEM WORKS

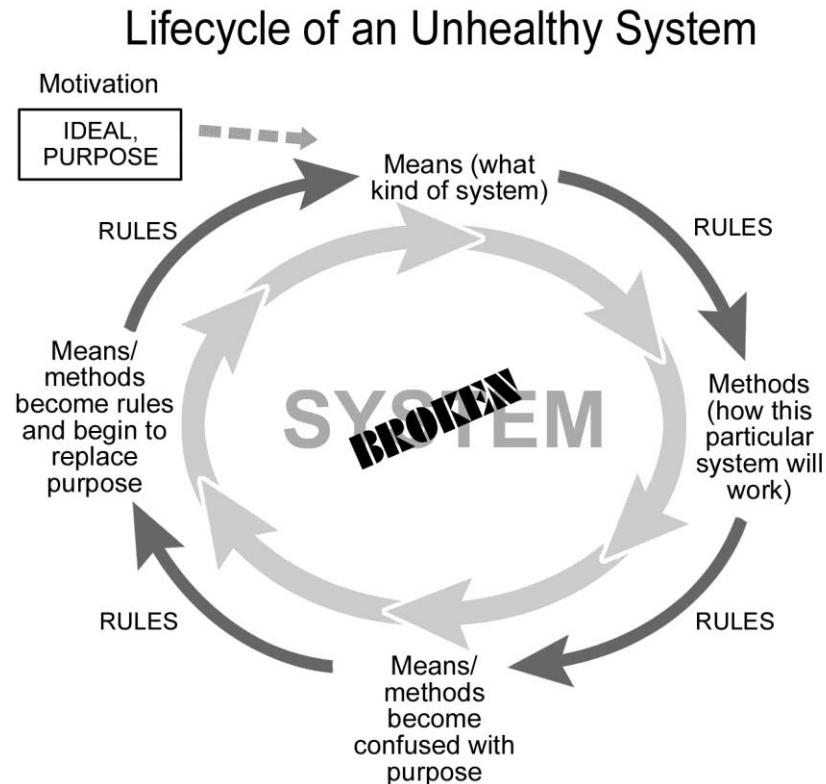
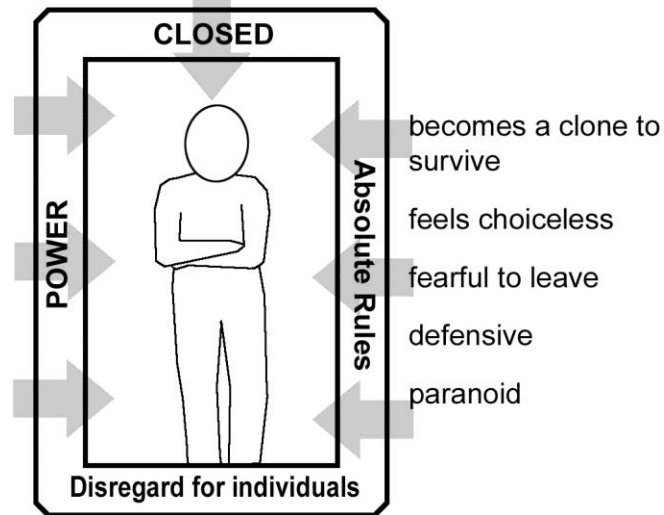


Figure Appendix A-4
©2003 Lois J. Bushong/Ruth E. Van Reken

WHAT A PERSON IN AN UNHEALTHY SYSTEM LOOKS LIKE...

Individual in an Unhealthy System



Stifles personal development and growth

Figure AppendixA-5
©2003 Lois Bushong/Ruth E. Van Reken

RESULTS OF AN UNHEALTHY SYSTEM...

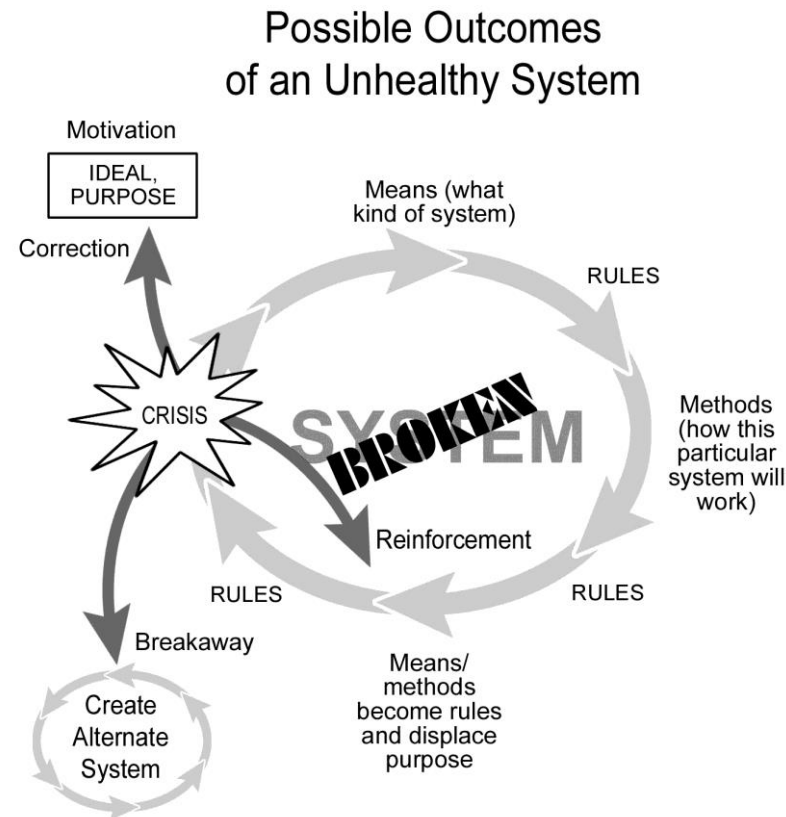


Figure Appendix A-6
©2003 Lois J. Bushong/Ruth E Van Reken

WHAT A PERSON IN A SICK SYSTEM LOOKS LIKE...

Individual in a Sick System

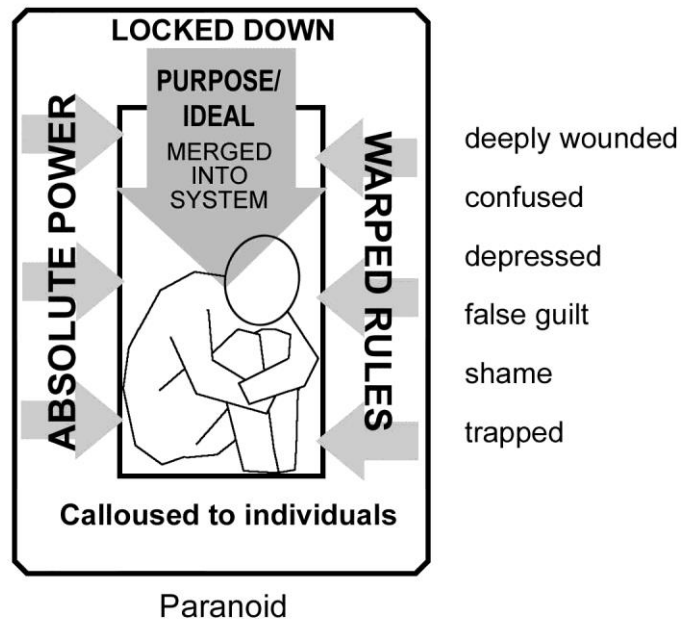


Figure Appendix A-8
©2003 Lois J. Bushong/Ruth E. Van Reken

BENEFITS OF GROWING UP IN A “GOD SYSTEM”

- Opportunity to see God at work
- Chance to learn much Biblical knowledge

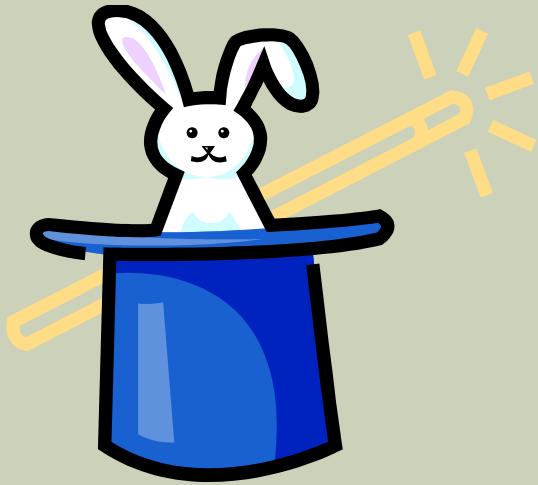


BENEFITS OF GROWING UP IN A “GOD SYSTEM”

- Places where can watch faith lived out fully
- High, positive, expectations of others can keep child “on track”

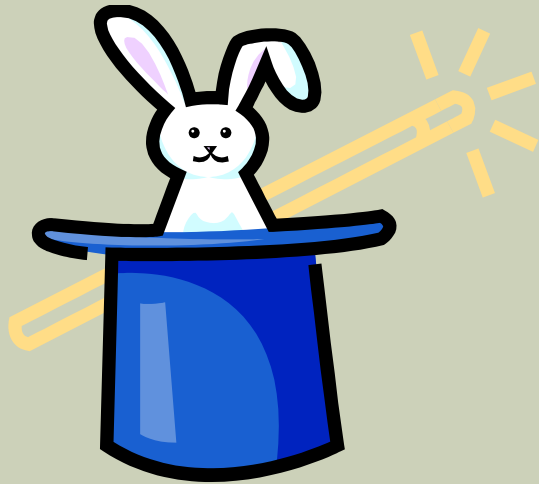


CHALLENGES OF GROWING UP IN A “GOD SYSTEM”



- When formulaic spiritual answers don't seem to work, where is God?
- How to turn knowledge into true trusting relationship
 - Magical thinking

CHALLENGES OF GROWING UP IN A “GOD SYSTEM”



- High expectation of others can cause rebellion when child can't/won't fit the system

BIGGEST CHALLENGE...

- When God and the system become one
 - The judgments of others in the mission community can easily become the judgments of God



BIGGEST CHALLENGE...

- Failure/wrong beliefs in/of the system distort the MK's perception of God
- Abuse in the system becomes “the will of God”
 - Systemic abuse may also be seen as having parental/God approval



WHAT JESUS SAYS ABOUT THE PHARISAICAL RELIGIOUS SYSTEM

■ “Closed”

- Does not want to be contaminated by “them”
- First priority is to maintain the system
- If someone is not in the system, he/she cannot be from God
- If God, himself, does not follow the system in how he works, he also is rejected



WHAT JESUS SAYS...

- **“Absolute rules rather than absolute principles”**
 - Defends tradition rather than truth
 - Debates doctrinal details to trap rather than to seek truth
 - Converts taught to follow system rather than God
 - Cares more for outer appearance rather than heart attitude
 - Nullifies the Word of God for traditions
 - Can have perfect behavior and a evil heart



WHAT JESUS SAYS...

- **“Disrespect for the individual”**
 - **Blames messenger for bad influence on others**
 - **Rules of the system transcend personal need**
 - **Becomes defensive or paranoid when others disagree**
 - **Angry at those who don't fit the system**



WHAT JESUS SAYS...

- **“Power”**
 - Has “holier than thou” attitude
 - Shows no mercy
 - Not practicing what it proclaims
 - Blind to its own sin
 - Wants to destroy anyone who opposes

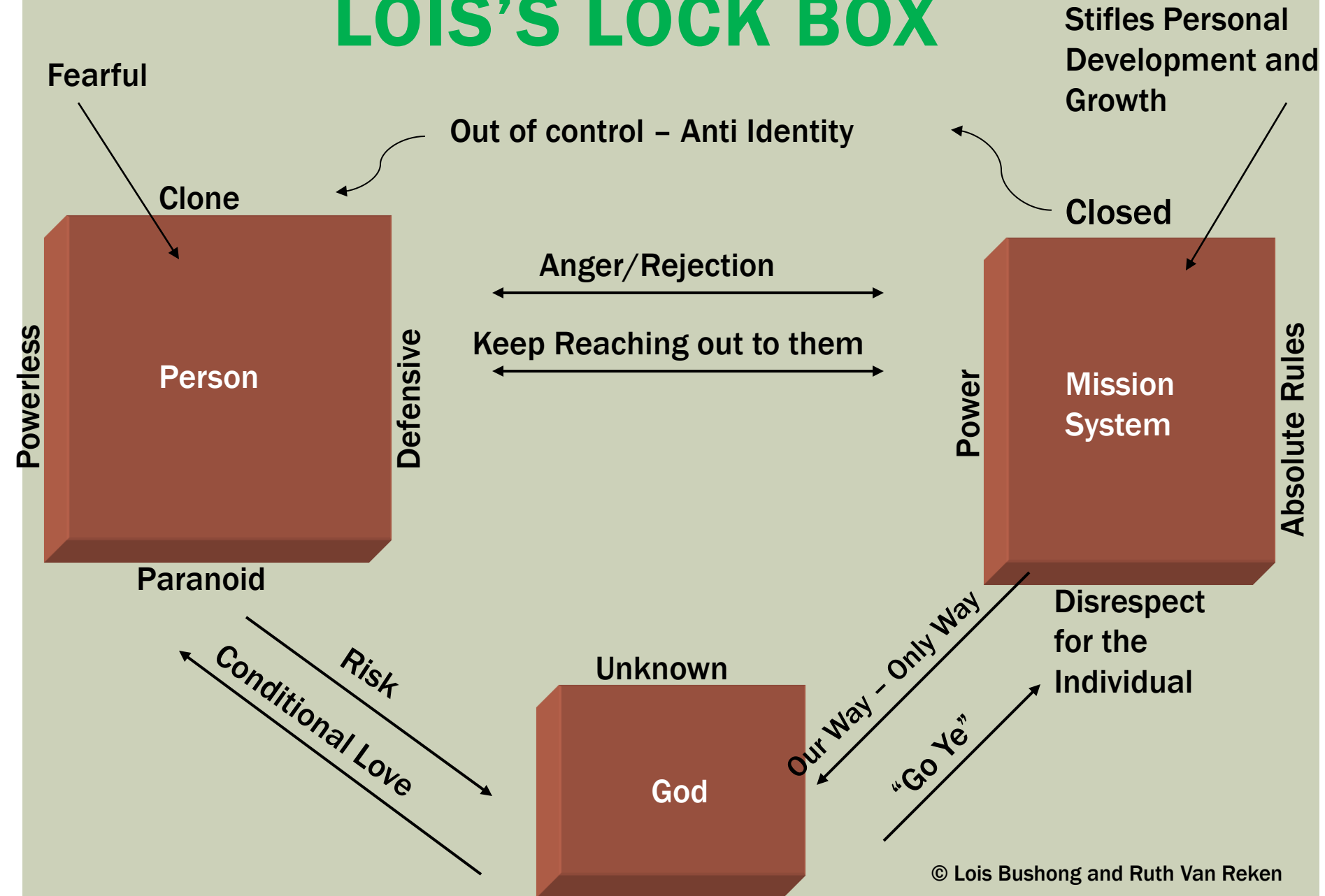


WHAT JESUS SAYS...

- Stifles personal development and growth
- Can't be fixed—must be replaced



LOIS'S LOCK BOX



LOIS'S JEREMIAH 29:11

Stifles Personal Development and Growth

Fearful

Out of control – Anti Identity

Closed

Absolute Rules

Anger/Rejection

Keep Reaching out to them

Clone

Person

Defensive

Paranoid

Powerless

Power

System

Disrespect for the Individual

Growth

New Person

Safety

Fulfillment

Open

Love

Trust

Forgiveness

Love

God

Wisdom

Belonging

Mystery

Grace

Absolute Principles

Gift

New Family

Boundaries

Acceptance

Respect

Trust

SYSTEMS AND IDENTITY

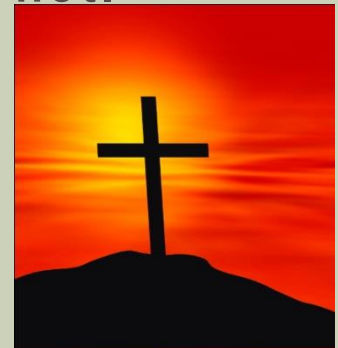
<p>Not fit, but keeps trying to fit</p> <p>SHAME</p> <p>win/Lose</p>	<p>Not Fit, and quietly does own thing</p> <p>Lose/Win</p>
<p>Fits</p> <p>Win/Win</p>	<p>Not Fit and continually proves it</p> <p>SHAME</p> <p>Lose/Lose</p>

COMMON ISSUE

Shame

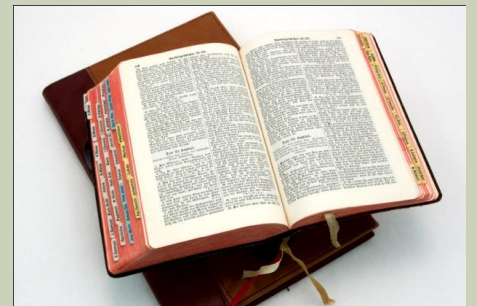
WHAT IS THE DIFFERENCE BETWEEN SHAME AND GUILT?

- Guilt is for when you've done something wrong...you have actually sinned.
 - There is a healthy shame for that but the antidote for guilt is forgiveness.
- Shame is for who you ARE...or even who you are not.
 - The only antidote for shame is grace.



HOW DO YOU KNOW IF YOU ARE FEELING GUILT OR SHAME?

- When you (or MKs) hear the opinions from others that translate into “I should” or “I shouldn’t” messages, ask “who says so?”
- Is this a message about what you have done or about who you are?
 - (caution: often a comment on an action is still fundamentally a comment on who you are)
- Remember what the Bible says about shame



SHAME IS NOT POSITIVE

- No one whose hope is in you will ever be put to shame...Ps. 25:3



REMEMBER...

- Shame began when Adam and Eve tried to transcend their humanness and be “like God”
 - How many shame messages come because we and/or MKs are finite rather than because we are sinful?



WHAT NEEDS FROM 'IMAGE OF GODness' ARE POTENTIALLY MET? WHICH ONES ARE POTENTIALLY CHALLENGED?

Re-Entry Experience – **Maybe?**

- Relational
- Emotional
- Intellectual
- Creative
- Volitional

- Unified
- Valuable
- Spiritual
- Physical



CAN WE HELP MAKE RE-ENTRY THIS?

Re-Entry Experience – Maybe?

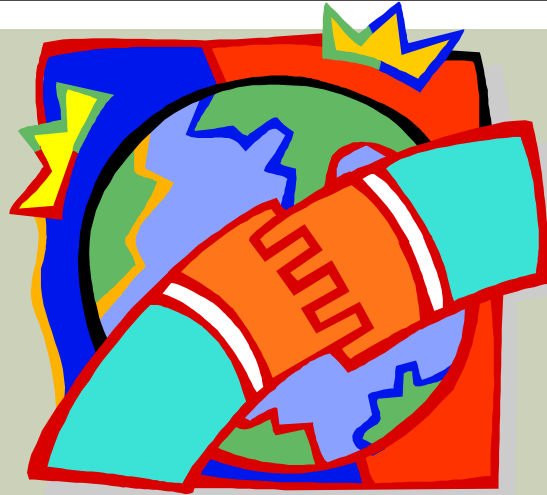
- Relational
- Emotional
- Intellectual
- Creative
- Volitional



- Unified
- Valuable
- Spiritual
- Physical

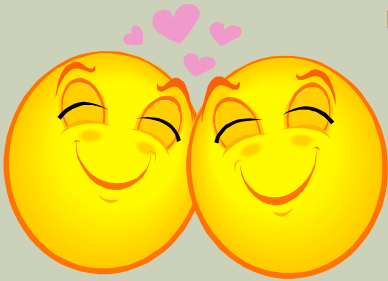


RELATIONAL NEEDS



- Look at different patterns of relationship between cultures
- Consider how their experience connects with others
- Don't wait for everyone to come to you...be interested in them

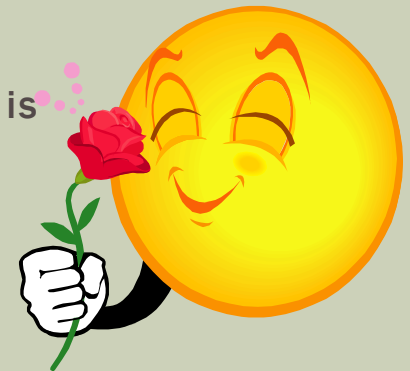
EMOTIONAL



- Give permission for paradox here
 - Pain and faith are not mutually exclusive
 - Joy and sadness are not mutually exclusive



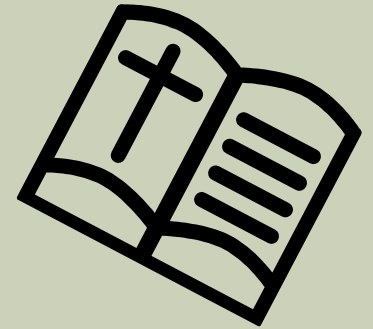
- Remember: “Emotions are the universal language.”
 - As you give yourself permission to experience ALL emotions, remember this is a connecting point to others with very different stories



SPIRITUAL NEEDS

HELP MKS SEPARATE GOD AND THE SYSTEM

- Ask God to show any system lies you/they have believed and even spread
- Learn to recognize subtle lies even with little kids
- Counter messages of any system that do not match God's truth with "Who says so?"
- Help parents and others to not use God or God language to manipulate/shame



OTHER NEEDS...

■ Intellectual

- Learn with intentionality how life works in this place
- Learn the rules of the sports you don't understand instead of disdaining them
- Thinking styles (Mind style)

■ Creative

- Decide how God made MK/you creative
- How will MK/you learn/use/express that creativity in this new place? Is this a place you can join your world
- “Where am I smart or creative?” Multiple intelligence -word, logic, body,



OTHER NEEDS...

■ Volitional

- When MKs feel choiceless, what are the choices they CAN make in the non-choices?
- If they feel powerless, are they not making a choice they could make?

■ Unified

- Keep a flow of connections with all the places and significant people
- “My life is like windows...”

■ Valuable

- Know giftings and operate in them



ONE LAST REQUEST...

- Don't forget those already wounded and shamed by the system
 - Don't defend the system when they start to express anger
 - Remember: God places us in systems for good reasons, but you don't need to defend the system to defend God
 - First, they're not the same
 - Second, God is big enough to defend himself!